



ABOUT US

Reading Repertory Theatre, in Reading, for Reading

Vision

Reading Rep strives to become a regional theatre with a national reputation. Our residency at Reading College's Performing Arts Centre has given us a fully flexible 60 seat black box studio space, just ten minutes walk from the town centre. This intimate venue will give us the opportunity to build a loyal audience as we cement our place as Reading's only professional producing house. We will utilise the flexibility of the space by producing an ambitious range of work designed to create an ongoing dialogue with the community; challenging and provoking them in a way that only live performance can.

Mission Statement

Reading's resident professional theatre will combine high-class productions with ground-breaking education and community engagement to help transform Reading's cultural landscape.

Theatre - Reading Rep will present plays from classics to new writing, revivals to musicals; producing outstanding productions of world class plays for the widest possible audience.

Education - Reading Rep's outreach work will transform Arts education in the UK by placing enterprise, experience and employability at its centre.

Community - Reading Rep invites community involvement in every aspect of our work both onstage and off – in so doing Reading Rep will reflect and represent Reading's diverse cultural community.

CAVERSHAM HEATH GOLF CLUB



Nestling on the borders of Berkshire and Oxfordshire, near Reading, in the grounds of the historic Mapledurham Estate, lies Caversham Heath Golf Club. Boasting a truly challenging Championship Length course of 7,151 yards, superb clubhouse and function facilities perfect for weddings and birthday parties, Caversham Heath welcomes you to our friendly golf club.

JOHN OSBORNE'S



LOOK BACK IN ANGER

MONDAY 22ND JULY - SATURDAY 3RD AUGUST 2013



Reading Rep
READING REPERTORY THEATRE



Described as 'a landmark of British Theatre', John Osborne's infamous play catapulted Jimmy Porter, the first Angry Young Man, onto the stage. A vicious indictment of middle-class mediocrity, LOOK BACK IN ANGER is an enthralling and disturbing work by a master British playwright.

A SNIPPET OF A REAL CONVERSATION

4.30, May 2013 , The Abbot Cook

Tim: We're not updating it!

Neil: Oh yeah, people will really get the music hall references

Tim: Ok then, let's swap them for X-Factor references! Idiot

Neil: He wrote it as a contemporary piece, not a period piece

Tim: He wrote it as a comment on Britain's uncertain place in the world. Elitism. A lost generation. Broken ideals. Wasted potential. Communication. Relationships.

Neil: So 2013 it is then.

Timothy James & Neil McCurley

WORK WITH US / EDUCATION PROGRAMME



'My placement with Reading Rep was extremely valuable to me as a literature student with a particular interest in drama. I learnt so much about the processes involved in transforming a script into a brilliant piece of theatre, and everyone was so kind and helpful to me. It has also resulted in further opportunities for me within the company, so I am delighted and feel much more confident about my prospects working in this industry.'

Jennifer Jope – Academic Placement Student for A Christmas Carol, December 2012

WORK PLACEMENTS

Reading Rep provides an ideal work placement scheme for those looking to gain experience in the development of a play from script to production. From those looking for a better understanding of how a script is developed and rehearsals are run, to the more technical-minded who may want to expand their knowledge on how costume, props, lighting and sound are united to enhance the production, Reading Rep can provide a tailor-made placement scheme to suit every candidate. Each person taking on a placement will have a mentor within the company who will ensure they gain a range of experiences to suit their particular interests. Placements are an ideal way of expanding knowledge in an area of interest and can help guide people towards the jobs they want.

If you are interested in our work placement and academic placement scheme, please email info@readingrep.com for more details. Please email your CV with a short covering letter outlining availability and what you'd like to gain from the experience.

GO FURTHER >>>
with Reading College



Want to find out more?

Advice days

Thursday 15 and 22 August
11am – 7pm

0800 371 434
enquiries@reading-college.ac.uk
www.reading-college.ac.uk





SUPPORT US

Your gift matters

As a registered charity, we count on the generous support of individuals, trusts and foundations, and businesses who help make our work happen. With ticket revenues comprising just 40% of our budget, it is these donations that help to raise the curtain on exciting and innovative theatre. Help us to transform Reading's cultural landscape!

Why give? Your contribution enables Reading Rep to keep ticket prices affordable for the entire community – from students to seniors, and everyone in between. It provides free and low-cost educational outreach programmes. And it ensures we maintain the artistic excellence you have come to expect at Reading Rep.

We invite you to show your support of Reading Rep's artistic excellence and innovative arts education programs by becoming an individual or corporate sponsor. For more information, please contact Aidan Grounds at aidan@readingrep.com.

Supporters

Reading Rep are extremely grateful to our current supporters, without whom our work would not be possible:



Championing, developing and investing in the arts and culture in England.



UnLtd support Social Entrepreneurs at every stage of their journey with advice and resources.



Reading Borough Council's Cultural Partnership celebrates arts and culture in Reading.



A local grant-making charity which was founded over 300 years ago. It serves Earley and east Reading, and is now one of the largest local grant-making charities in central southern England.



A partnership between the private, public, voluntary and community sectors that work together to address areas of need within Greater Reading.

www.jamesworthington.net
CREATIVE MEDIA PRODUCTION & DESIGN

Creating promotional media to strengthen the brand and image of companies.



Signs, Decals, Digital Printing, Custom Signs, Sign Solutions.



Reading College is a forward thinking and thriving further education college located at the edge of Reading town centre.



Jelly is an energetic charity championing the creative arts. It enables art to appear in unexpected places and creates opportunities for people to look on and join in.



Healthy Planet is a charity set up to inspire, encourage and support people around the world and allows you to make a positive and measurable difference.



The Hexagon is a well established multi-purpose venue in the heart of Reading. They have an exciting programme of events, including Rock, Pop, Comedy, Classical Music and Dance.



St. George's is a place where girls flourish academically, creatively, physically and morally. A place where risks can be taken, lessons are learnt and challenges are welcomed.



ABOUT THE PLAY

Written in 1956, Osborne's 'Look Back In Anger' was a watershed in British theatre history. Not only did it challenge the theatrical conventions of the time, but it challenged the conventions of the time itself.

Theatre at the time was written for the upper and middle classes, and about the upper and middle classes. Osborne's play smashed through these barriers.

Whilst not as theatrically radical as the work of Brecht and Beckett, whose work also arrived on the London stage in the mid 1950's, Osborne's play was radical in its own way. It was an attempt to capture the everyday life of 'normal' people. Reading the papers. Doing the ironing. Arguing about when to go the pub. Without 'Look Back In Anger', there would be no 'Eastenders'.

Osborne also tried to capture the wider political sense of the times: the decline of the British Empire; the rise of America; rock and roll; youth rebellion; the lack of 'good brave causes' after the defeat of Fascism in 1945.

Whether he succeeded in achieving these aims is open to debate, but as the critic Kenneth Tynan commented in the most famous review of the play:

"I could never love anybody who did not love Look Back In Anger"



CAST

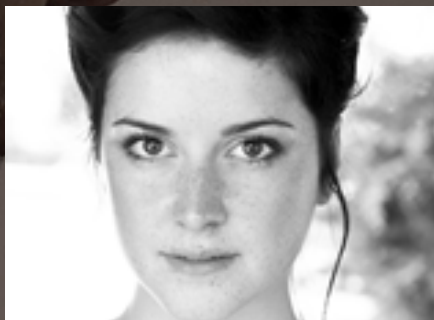


Jimmy Porter: Jack Wharrier

Jack trained at Bristol Old Vic Theatre School.
Theatre Includes: MacBeth, Hamlet, Romeo and Juliet (Young Shakespeare Company), Twelfth Night (Old Bomb Theatre Company), All Creatures Great and Small (Durham Gala Theatre), The Family (Public Theater, NYC), Cinderella (Salisbury Playhouse), Sus (Splice Productions).
Television includes: Derren Brown: The Experiments (Objective/C4)
Film includes: Lighthouse (Better than Petrol), Home Economics (Rohan Green Productions)

Alison Porter: Harriet Hare

This will be Harriett's first time performing with the Reading Rep Theatre. Harriet is a recent graduate from the Mountview Academy of Theatre Arts where credits included: Twitch in Hot Mess, Rozencrantz in Hamlet, Elizabeth Malet in The Libertine and Kelly in Bassett.



Cliff Lewis: Rick Romero

For Reading Rep, Rick has appeared as Gus in The Dumb Waiter and Jacob Marley and the Ghosts in A Christmas Carol. Other Theatre credits include Macbeth, Julius Caesar, Birdy, Withnail and I, Burning Blue, Closer, Sexual Perversity in Chicago, Popcorn, Lady Chatterley's Lover, and The Pillow Man, all with Kangaroo Court Theatre Company. Radio includes Dan and Nick: The Wildebeest Years, and Dan and Nick: Return To The Wildebeest (BBC Radio 4) as performer/musician, and The Body Without A Face (Boddicker Films Audio Drama) as actor and producer.

Helena Charles: Kate Tydman

Theatre Credits include: Kiss Me Kate (The Old Vic/Chichester Festival Theatre); Finding Neverland (Leicester Curve); Pippin (Menier Chocolate Factory); Me & My Girl (Sheffield Crucible); Much Ado About Nothing (Regent's Park); Gigi (Regent's Park Open Air Theatre); Candide (ENO); Joseph and the Technicolor Dreamcoat (Adelphi Theatre); Evita (Adelphi Theatre); Dora L'Exploratrice (Paris); Mary Poppins (Prince Edward Theatre); Chitty Chitty Bang Bang (Palladium); Cats (New London Theatre and Tour); Esther (Palace London).
Television and Film Credits include: Richard's Mother in From Gloucester to Richard (Tambrisk Pictures); Luvvie in The Legend of Dick and Dom (BBC).



TEAM

Directed by Neil McCurley & Timothy James
Designed by Victoria Spearing
Lighting & Sound by Russell Pearn

Artistic Director- Paul Stacey
Producer- Aidan Grounds
Education and Community Director- Katia Cole
Company Manager- Ana Becker

Assistant Director- Annie Fawke
Costume Supervisor- Anna Lewis
Front of House Manager- Mandi Brown

Reading Repertory Theatre would like to thank:

All at Reading College, all at Colemansmoor, Linda Stacey, Emily Precious, Rick Romero, Sophie Stephenson-Wright, Ruby Thomas, Krishna & Adrian Grounds, Patrick Doyle, Richard Kingdom, Ian Legge, Kate Shaw, Lauren Hall, Lucy Collins, James Worthington, Natasha Hooper, Nothando Gazi, April Potterton, Liam Buckley, Kirk Ramsey, Judith Wiggett, Ellie Dearing and everyone else who helps to make our productions possible.